

VP-939FS

Using these tools, it is possible to replace the valve seal, remove and install the valve spring without displacing the cylinder head! Applicability ranges from mini-sized motor vehicles and passenger cars to light duty trucks.

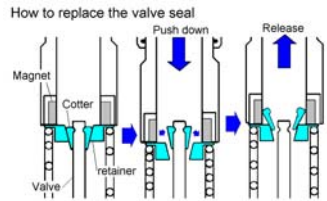
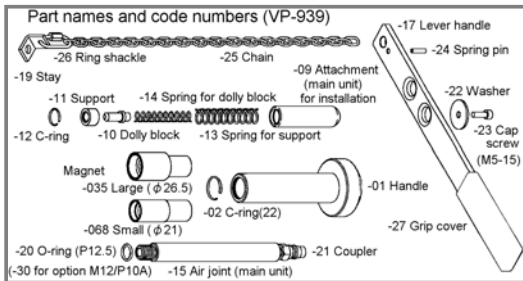
Optimum for DOHC engines which are appearing more and more frequently on the scene.

With a powerful magnet incorporated, there is no need of worrying about dropping a cotter in a clearance narrower than a finger.

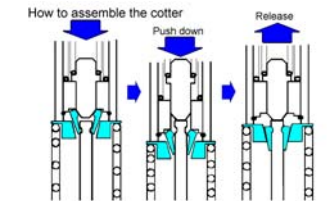
While the valve is held by air and the cylinder head supported on top, the cotter can be removed and installed by a single touch.



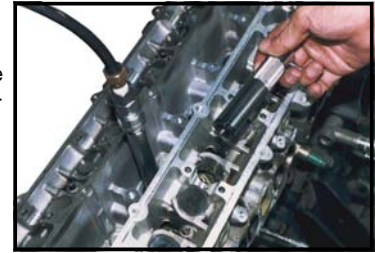
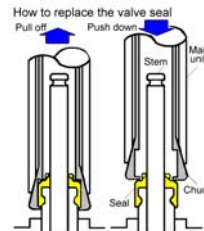
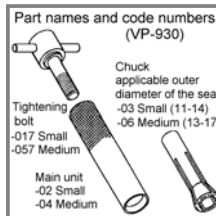
Components included in the VP-939FS set



The cotter is adsorbed by the magnet and removed together with the retainer.



Push down the retainer so that the cotter will not tilt and release the retainer, and the cotter will fit into the groove.



OPTIONS

- VP-939-35
- VP-939-15
- VP-939-28AS (short)
- VP-939-29AS (for mini-sized motor vehicles)

An extension joint, the VP-939-35, is necessary for engines in which the plug is positioned deeply inward, such as the Toyota 3S-F and 4S-F models.