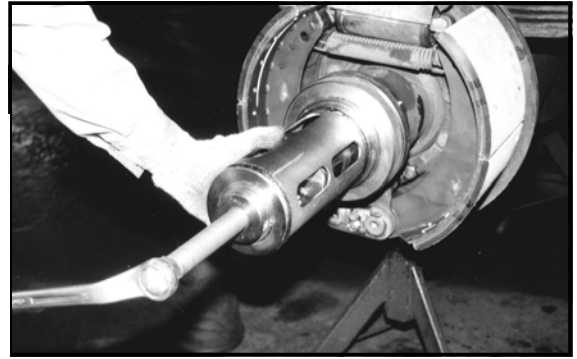


WHEEL INNER BEARING RACE PULLER

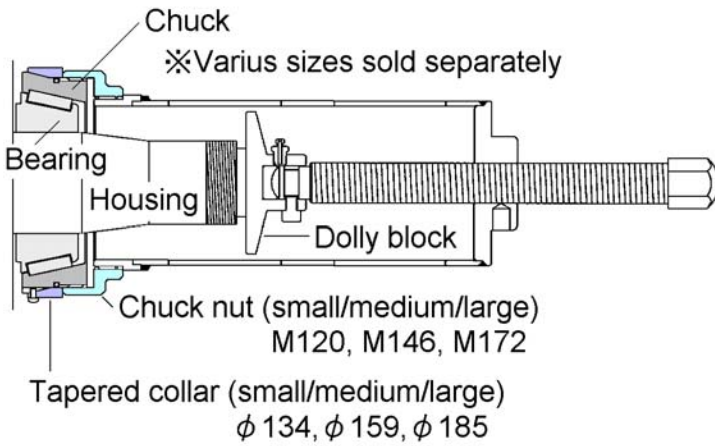
JH-919

Now, bearing races can be removed quickly and completely! Front and rear hub bearings can be removed from vehicles ranging from 4 tons to large-sized vehicles, and buses, easily and with no damage.

Set includes main unit set, handle, large/medium/small tapered collars, and large/medium/small chuck nuts. Only the chuck is sold separately. Select the appropriate product from the table below, based on the application.



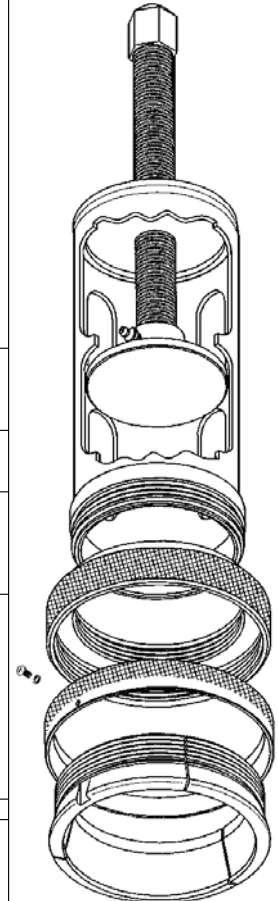
How the tool is used
The three-part chuck is inserted with a click, and the tapered collar set on it, and then the chuck nut and main unit are simply screwed in. No unnecessary bolts. Work can be carried out easily, with only a single spectacle. Naturally, there is no scratching of bearings.



Applicable JH-919 Chucks (sold separately)

Maker	Type	Model	ForR	Chuck no.
FUSO	Truck	FS	FR	R 92W (32309)
FUSO	Truck	FK	F	R 94W
		FS	FR	(TR111003)
	Bus	B6,BK,MK	F	
NISSAN	Condor	CL,CM	F	
	Truck	CM	F	
	Tractor	CM	F	
	Bus	RM	F	
FUSO	Truck	FK ("88-)	F	R98W (55KW02)
HINO	Ranger	FC,FD,FG,GD,KG	F	R102W
	Truck	FD	F	(32310)
	Truck	FW	FR	
	Tractor	SD	F	
	Bus	RJ,RA,RB,RBA	F	
ISUZU	Forward	FC-FT,SB,NR	F	
	Truck	CXH	FR	
	Bus	CC,CD,DB,LR,MR	F	
HINO	Ranger	FC,FD	R	R112W
	Bus	AC,AM,RJ,RR	R	(32213)
NISSAN	Truck	CK	F	(32311)
	Crane	KG(50-53)	F	(212047)
ISUZU	Forward	FT,FS,ES,JC,JD	F	
	Truck	CXH	FF	
	Bus	LT	F	
FUSO	Truck	FM-FV,NV,NW	F	R121W
		FS	FF	(TR131305)
		FP	R	Fuso is R130W
	Bus	MM,MP,MS,MU	F	(CR1364) from
HINO	Ranger	GD(A)	R	90, and some
	Truck	WB	F	are R140W
		FW,KK	R	(CR1373)
	Tractor	SD	R	(CR1561)
	Bus	RJ,RR(A)	R	from '96
NISSAN	Condor	CK	F	
FUSO	Truck	FK,FN,FS	R	R123W
	Bus	B6,BK,MK	R	(32215)
HINO	Ranger	FC,FD,FG,GD	R	
	Truck	FD,FW(BA)	R	
	Tractor	SD	R	
	Bus	RJ,RR(B,BA)	R	
NISSAN	Condor	CM	R	
	Truck	LW	R	
	Tractor	CM	R	
	Bus	RM	R	
ISUZU	Forward	ES,JD,SB,NR,FC-FT	R	
	Bus	CC,CD,DB,LR,MR	R	
HINO	Ranger	FF,KR,FG	F	R129W
	Truck	FH,FN,FP,FR,FS	F	(32313)
		GN,KB,KF,KK,KW	F	(30313)
		FW	FF	
	Tractor	FN	F	
		HE,HH,SH,SS		
	Bus	AM,HT,HU,RC,RE	F	
		RD,RJ,RR(AA,AB)		
		RK,RS,RT,RU,RV		
NISSAN	Truck	CD,CK,CV,CW	F	
		LW,LG,TK,TW		
	Crane	KG,KK,KW	F	
	Tractor	CK,CW	F	
	Bus	DA,RA,U,UA	F	
		DA	RF	
ISUZU	Truck	CV,CX,TD	F	
	Tractor	EX,ST,SV,VS,VT	F	
	Bus	CH	F	
		LV	F/R	
FUSO	Truck	FP(DR)	F/R	R132W
ISUZU	Forward	FT,JC	R	(CR1555)
	Truck	HT	F/R	(32216)
	Bus	LT	R	
HINO	Truck	WP	F	R138W
NISSAN	Truck	LW	F	(32314)
	Crane	KG,KW	F	(6460)
HINO	Ranger	FF,KR,FG,KG	R	R141W
	Bus	RK	R	(32217)
NISSAN	Condor	CK,CL	R	
	Truck	CF,CZ	F	
	Tractor	CM	F	
FUSO	Truck	FM-FV,NV,NW	R	R151W
	Bus	MM,MP,MS,MU	R	(TR191604)
HINO	Truck	FH-FW,GN,KB,KF,WP	R	(32218J)
	Tractor	FN,HE,HH,SH,SS	R	
	Bus	AM,HT,HU,RC-RV	R	
NISSAN	Truck	CD-CZ,LG,TK,TW	R	
	Crane	KG,KK,KW	R	
	Tractor	CK,CW	R	
	Bus	RA,U,UA	R	
		DA	RR	
NISSAN	Crane	KG(53W)	F	R156W (32316)
NISSAN	Crane	KG(51,53)	RR	R165W
ISUZU	Truck	CVS,CXW	F	(32220)
	Tractor	VSR,VTR	R	R168W
		VSR,VTR	RR	(32220J)
	Bus	CH(A)	R	
NISSAN	Crane	KG(50-53)	R	R177W (32221)

The JH-901 should be used for 2 ~ 4-ton vehicles.



* Nos. in parentheses are bearing code numbers.