

ANCHOR PIN PULLER

AP-32

Quick removal using a sliding hammer!

[Items in set]

Main unit

Hammer coupling
(for M18 x P2.0)

For M12 washers

For M14 washers

For M16 washers

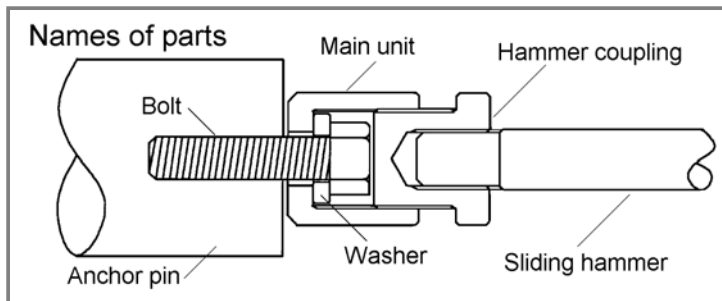
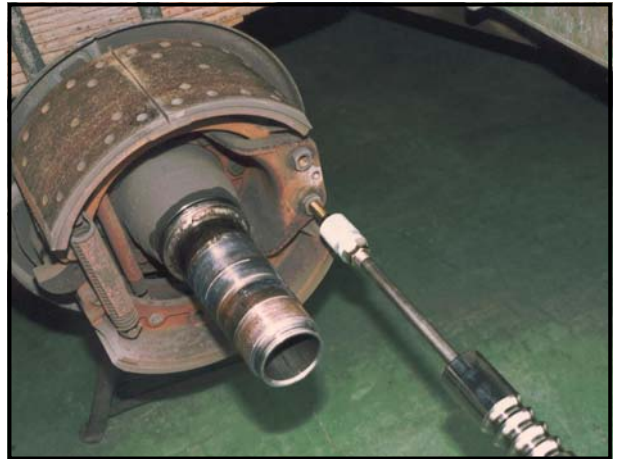
Bolt: M12 x P1.25

Bolt: M14 x P1.5

Bolt: M16 x P1.5

[Optional]

M12 x P1.0



* The sliding hammer is sold separately (see SH-32).

* Various switching joints are available which enable existing sliding hammers to be used.